



GOOD MORNING  
Have Good Trading Day

THURSDAY



Price is what you pay.  
Value is what you get.

- Warren Buffet



## MARKET PULSE

### INDIAN INDICES

NAME	CMP	NET CH.	%
SENSEX	29336	+17	+0.06
NIFTY	9103	-1	-0.02

### INDIAN ADR'S

SYMBOL	CLOSE	GAIN/ LOSS %
DRREDDY	40.35	+0.55
HDFCBANK	78.06	UNCH
ICICIBK	8.49	-2.53
INFY	14.42	UNCH
TATAMOTOR	33.82	UNCH
WIPRO	9.83	+1.13

### FII AND MF ACTIVITY

SYMBOL	In Crs.
FIIs Eq (Provisional)	-673
FIIs Index Future	-1027
FIIs Index Options	+807
FIIs Stock Future	+269
FIIs Stock Options	-69
DII's Eq (Provisional)	+525

### CURRENCY

RBI RATE	19-APR-2017
RUPEE - \$	64.5443
EURO	69.1915
YEN 100	59.3900
GBP	82.7458

## MARKET PULSE

### GLOBAL INDICES

NAME	CMP	NET CH.	%
DOW	20404	-118	-0.58
NASDAQ	5863	+13	+0.23
NIKKEI	18476	+44	+0.24
HANG SENG	23881	+54	+0.23
SGX NIFTY	9132	-3	-0.09

### WORLD COMMODITIES

FUTURE	CMP	%
CRUDE	51.16	+0.31
NATURAL GAS	3.194	+0.009
GOLD	1281.2	-2.2
SILVER	18.150	-0.012
COPPER	2.5190	-0.0155

### WORLD EVENTS

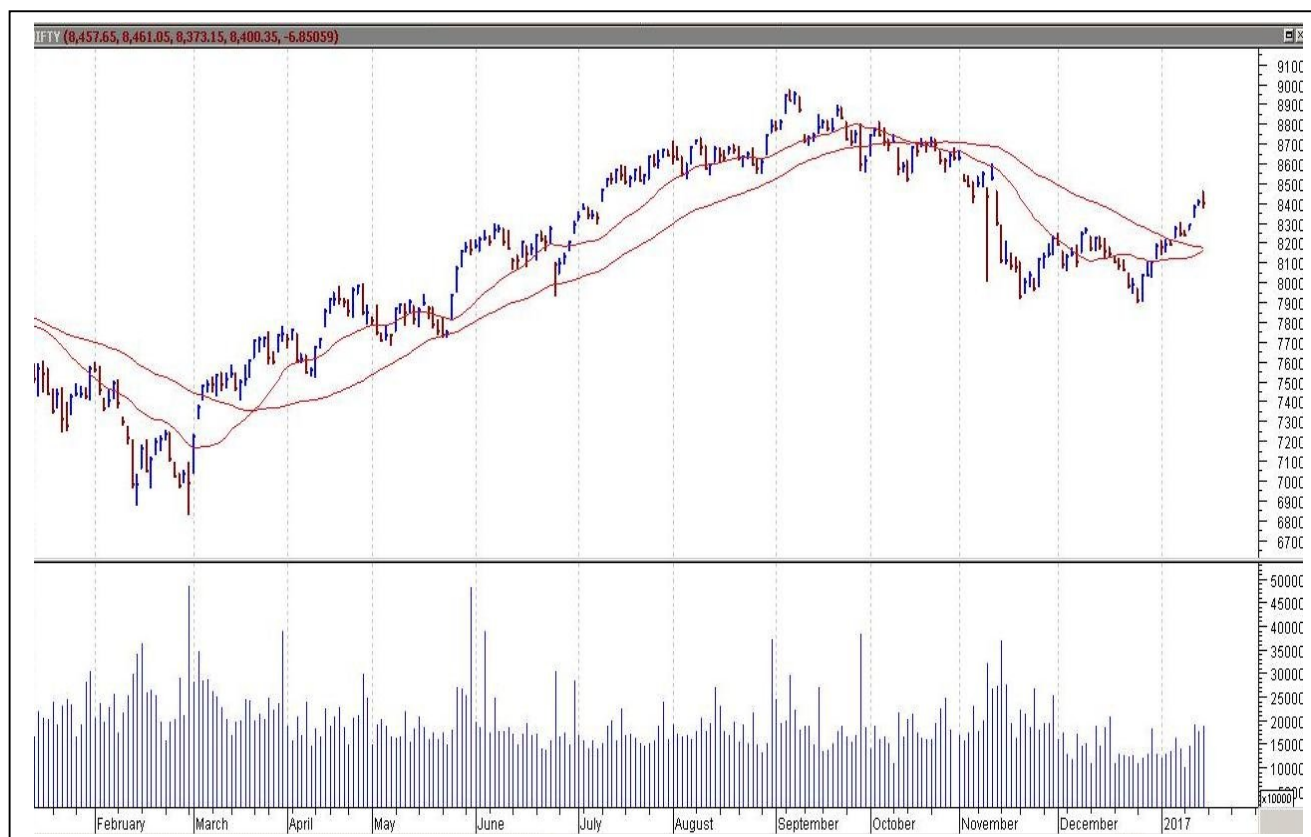
- US : Unemployment Claims
- UK: BOE Gov Carney Speaks

## TOP STORY

- Yes bank -Net Profit Up 30.2% At `914.1 Cr Vs `702.1 Cr (YoY).
- RS Software Q4 -Cons Net Loss At `3.6 Cr Vs Loss Of `4.2 Cr (QoQ).
- Tata, Godrej, Adani Show Interest In 30 Sahara Properties Worth `7,400 Cr.
- Reliance Industries commissions world's largest and most complex Ethane Project at Dahej.
- Ballarpur Ind - Ind-Ra downgrades NCD to D.
- Zee Entertainment in advanced talks to buy new silk routes 9x media.
- IDFC Bank and RBL join the race to buy Bharat fin.
- DHFL may sell majority stake in Aashar Housing Finance.
- NTPC Board Approves Upsizing \$4 Bn MTN Programme To Upto \$6 Bn.
- Goderj Properties to raise 1500cr by selling office assets to pare debt.
- ay Bharat Maruti Q4 -Net Profit Up 71.9% At `20.8 Cr Vs `12.1 Cr (YoY).



## NIFTY CHART



## MARKET COMMENTARY

Indian stock markets ended the range bound day of trade on a flat note as investors gauged the impact from British Prime Minister Theresa May's surprise decision to hold early elections. There was no major buying in any corner that could lift the markets and traders remained on sidelines ahead of the first-round presidential polls in France this weekend and amid brewing geopolitical tensions. Market participants also remained cautious with the report that IMF trimmed India's annual growth forecast by 0.4 percentage points to 7.2% for 2017, citing the temporary negative consumption shock induced by cash shortages and payment disruptions from the recent demonetization move. For today's trade Nifty likely to trade in the range between 9065 - 9165.

## MARKET LEVELS

	CMP	SUPPORT LEVELS				RESISTANCE LEVELS			
NIFTY	9103	9095	9085	9065	9045	9125	9135	9155	9175
USDINR	64.63	64.55	64.5	64.45	64.4	64.7	64.75	64.8	64.85



### BULK DEALS (BSE)

SCRIP	CLIENT NAME	BUY/SELL	QUANTITY	PRICE
ASHIMASYN	M P INVESTMENTS INDIA ITED LIMITED	S	1,077,465	18.7
ASHIMASYN	NAVCHINTAN TRUST	B	1,077,465	18.7
UNIPLY	FOUNDATION OUTSOURCING INDIA PRIVATE LIMITED	B	188,809	321.95

### BULK DEALS (NSE)

SCRIP	CLIENT NAME	BUY/SELL	QUANTITY	PRICE
KAMATHOTEL	CLEARWATER CAPITAL PARTNERS (CYPRUS) LIMITED ( FCCB)	SELL	1448884	43.96
LCCINFOTEC	RURAL ELECTRIFICATION CORPORATION LIMITED	SELL	822210	0.2
MOHITIND	JP J FINANCIAL SERVICES	BUY	79878	45.86
MUTHOOTCAP	FOUR DIMENSIONS SECURITIES (INDIA) LTD.	BUY	68000	420.54
SHALPAINTS	EQUITY INTELLIGENCE INDIA PRIVATE LIMITED	BUY	100000	197.84

### SCRIP'S IN F&O BAN

(To resume for normal trading below 80% of market wide limit required)

BHARATFIN,HDIL,IBREALEST,INFIBEAM,IRB,JINDALSTEL,JPASSOCIAT,JSWENERGY,RELCAPITAL, UJJIVAN

### Initial Public Offering (IPO)

Company Name	Security type	Issue Start Date	Issue End Date	Status



NIFTY 50 STOCKS: SUPPORT & RESISTANCE						
Symbol	Close	Support 1	Support 2	Pivot Point	Resistance1	Resistance2
ACC	1511.35	1491.90	1472.45	1504.90	1524.35	1537.35
ADANIPORTS	325.80	320.82	315.83	324.23	329.22	332.63
AMBUJACEM	240.15	237.33	234.52	239.62	242.43	244.72
AXISBANK	499.50	491.35	483.20	496.40	504.55	509.60
ASIANPAINT	1048.90	1036.40	1023.90	1046.20	1058.70	1068.50
BAJAJ-AUTO	2808.70	2787.50	2766.30	2809.25	2830.45	2852.20
BANKBARODA	174.85	173.03	171.22	175.12	176.93	179.02
BHARTIARTL	339.95	334.55	329.15	338.15	343.55	347.15
BHEL	174.05	169.50	164.95	172.15	176.70	179.35
BOSCHLTD	22475.35	22334.25	22193.15	22542.10	22683.20	22891.05
BPCL	722.90	712.50	702.10	722.10	732.50	742.10
CAIRN	286.70	279.90	273.10	284.90	291.70	296.70
CIPLA	575.40	573.10	570.80	575.05	577.35	579.30
COALINDIA	282.70	278.07	273.43	280.73	285.37	288.03
DRREDDY	2607.40	2594.60	2581.80	2615.30	2628.10	2648.80
GAIL	393.80	388.60	383.40	394.25	399.45	405.10
GRASIM	1082.20	1065.87	1049.53	1077.33	1093.67	1105.13
HCLTECH	808.60	801.85	795.10	810.70	817.45	826.30
HDFC	1490.20	1476.17	1462.13	1484.23	1498.27	1506.33
HDFCBANK	1449.00	1439.08	1429.17	1447.92	1457.83	1466.67
HEROMOTOCO	3199.75	3173.17	3146.58	3205.58	3232.17	3264.58
HINDALCO	186.00	182.97	179.93	185.08	188.12	190.23
HINDUNILVR	908.55	903.55	898.55	911.00	916.00	923.45
ICICIBANK	280.55	277.93	275.32	281.47	284.08	287.62
IDEA	86.20	85.50	84.80	86.25	86.95	87.70
INDUSINDBK	1421.60	1407.52	1393.43	1425.63	1439.72	1457.83
INFY	919.20	911.23	903.27	920.62	928.58	937.97
ITC	278.70	277.20	275.70	279.35	280.85	283.00
KOTAKBANK	875.60	868.00	860.40	874.80	882.40	889.20
LT	1670.55	1663.27	1655.98	1669.13	1676.42	1682.28
LUPIN	1410.25	1404.58	1398.92	1413.72	1419.38	1428.52
M&M	1259.45	1252.00	1244.55	1260.45	1267.90	1276.35
MARUTI	6196.95	6133.05	6069.15	6177.70	6241.60	6286.25
NTPC	164.90	162.03	159.17	163.97	166.83	168.77
ONGC	179.85	178.72	177.58	180.33	181.47	183.08
PNB	153.20	148.87	144.53	153.68	158.02	162.83
POWERGRID	211.20	204.27	197.33	208.88	215.82	220.43
RELIANCE	1368.80	1356.72	1344.63	1369.63	1381.72	1394.63
SBIN	284.05	280.72	277.38	286.23	289.57	295.08
SUNPHARMA	663.35	657.83	652.32	666.92	672.43	681.52
TATAMOTORS	443.05	437.73	432.42	443.62	448.93	454.82
TATAMTRDVR	271.55	267.95	264.35	270.75	274.35	277.15
TATAPOWER	85.65	84.28	82.92	85.47	86.83	88.02
TATASTEEL	450.75	443.37	435.98	449.43	456.82	462.88
TECHM	414.30	409.33	404.37	417.42	422.38	430.47
TCS	2299.15	2251.73	2204.32	2300.22	2347.63	2396.12
ULTRACEMCO	3939.80	3908.25	3876.70	3957.55	3989.10	4038.40
VEDL	234.15	228.13	222.12	232.52	238.53	242.92
WIPRO	498.25	492.52	486.78	496.03	501.77	505.28
YESBANK	1605.45	1592.13	1578.82	1605.57	1618.88	1632.32
ZEEL	521.90	517.53	513.17	520.97	525.33	528.77



## CORPORATE ACTION / BOARD MEETINGS

NSE Download Ref. No.: NSE/CML/34587: Suspension of trading in Equity Shares of NEPC India Limited in accordance with SEBI circular dated November 30, 2015. Trading in the Equity Shares of the companies would be suspended w.e.f. April 28, 2017 and the suspension will continue till such time the Company complies including the payment of fine.

NSE Download Ref No : NSE/FAOP/34640: Discontinuation of Futures and Options Contracts in the security Cairn India Limited. The existing contract will expire April, 25, 2017.

NSE Download Ref. No.: NSE/CML/34627: Suspension of trading in equity shares -Cairn India Limited. Symbol-Cairn, Series-EQ, Reason for Suspension-Scheme of Arrangement. This Circular shall be effective from April 26, 2017.

NSE Download Ref. No.: NSE/CML/34681: Face Value Split -BLS International Services Limited. Symbol-BLS, Existing Face Value & Paid up Value (Rs.) 10, New Face Value & Paid up Value (Re.) 1. This circular shall be effective from April 26, 2017.

NSE Download Ref. No.: NSE/CML/34672: Listing of Equity Shares of Dollar Industries Limited (New Listing). This circular shall be effective from April 21, 2017.

### BOARD MEETINGS

COMPANY NAME	DATE	PURPOSE
FOSECOIND	20-Apr-17	Dividend - Rs 7/- Per Share
SANOFI	25-Apr-17	Annual General Meeting/Dividend Rs 50/- Per Share
RAIN	26-Apr-17	Annual General Meeting
BLS	26-Apr-17	Face Value Split From Rs 10/- Per Share To Re 1/- Per Share
ORIENTPPR	26-Apr-17	Interim Dividend Re 0.50 Per Share
VASWANI	27-Apr-17	Extraordinary General Meeting
MOLDTECH	27-Apr-17	Interim Dividend
ABB	28-Apr-17	Annual General Meeting/Dividend - Rs 4/- Per Share
ITDCM	3-May-17	Annual General Meeting/Dividend - Re 0.30 Per Share
CRISIL	3-May-17	Interim Dividend
VESUVIUS	4-May-17	Dividend - Rs 6.50 Per Share
RSYSTEMS	8-May-17	Annual General Meeting
GMBREW	9-May-17	Annual General Meeting/Dividend - Rs 3/- Per Share
GODREJCP	16-May-17	Interim Dividend
NESTLEIND	19-May-17	Annual General Meeting/Dividend - Rs 23/- Per Share
MERCK	25-May-17	Annual General Meeting/Dividend-Rs 11/- Per Share (Revised)
CASTROLIND	25-May-17	Annual General Meeting/Dividend-Rs 4.50 Per Share
FOSECOIND	20-Apr-17	Dividend - Rs 7/- Per Share
SANOFI	25-Apr-17	Annual General Meeting/Dividend Rs 50/- Per Share
RAIN	26-Apr-17	Annual General Meeting

## NEWS & RUMOURS:

- Gold (Spot Dollar) major support = \$1249/\$1222 & Resistance = \$1321/\$1359.
- Crude oil range->\$47 to \$57.

- Stocks Advance with Dollar as Haven Demand Eases: Markets Wrap: - Markets struck a note of cautious optimism on Wednesday, with U.S. and European equities rebounding and haven assets declining. The pound extended its gain following the [surprise election](#) announcement.
- Dollar index remains higher but gains capped: - The dollar remained broadly higher against other major currencies on Wednesday, but gains were capped by ongoing U.S. political uncertainty and geopolitical tensions around the world. Sentiment on the greenback remained vulnerable as [trade talks between the U.S. and Japan got underway this week](#), with markets awaiting indications of the direction U.S. trade policy could take under President Donald Trump.
- Oil stays near 2-week low as crude stocks fall by 1M barrels: - Oil prices stayed near their lowest level in two weeks in North American trading on Wednesday, after data showed that U.S. crude supplies fell less than expected last week. The U.S. Energy Information Administration said in its weekly report that crude oil inventories fell by [1.0 million barrels](#) in the week ended April 14.
- Gold under pressure as haven demand eases: - Gold prices edged lower in North American trading on Wednesday, as demand for safe-haven assets eased amid a recovery in the dollar and global equities.
- U.S. natural gas futures recover after falling to 3-week low: - U.S. natural gas futures were higher on Wednesday, bouncing off the prior session's three-week low as traders monitored shifting weather forecasts to assess the outlook for early-spring demand and supply

## TRENDS & OUTLOOK – DATE: 20-Apr- 2017

### PRECIOUS METALS:

COMMDITY (MCX)	S2	S1	PIVOT POINT	R1	R2
GOLD (June)	28791	29030	29300	29601	29880
SILVER (May)	39600	40500	41900	43200	44710

### BASE METALS

COMMDITY (MCX)	S2	S1	PIVOT POINT	R1	R2
COPPER (Apr)	349	355	363	369	375
ZINC (APR)	156.70	160.20	163.90	168.55	172.75
LEAD (Apr)	130.30	135.25	138.90	143.55	148.30
NICKEL (Apr)	570	588	609	625	648

### ENERGY

COMMDITY (MCX)	S2	S1	PIVOT POINT	R1	R2
CRUDE OIL (May)	3130	3220	3355	3475	3591
NATURAL GAS (Apr)	194	199	205	214	221

### DATA TALKS : TODAY'S ECONOMIC DATA :

Philly Fed Manufacturing Index, Unemployment Claims, CB Leading Index m/m, Natural Gas Storage, BOE Gov Carney Speaks, Treasury Sec Mnuchin Speaks.



LET THE  
**WOMAN  
POWER RISE**

**WOMEN  
DESK**

All the Ladies in the house are  
cordially invited to come  
& explore their trading talents.

**TOLL FREE: 18001030059**



Registered Office

Indira House, 3rd Floor, 5 Topiwala Lane,  
Opp. Lemington Road Police Station, Grant Road (East), Mumbai - 400007.

Corporate Office

'Ramavat House' E-15, Saket Nagar, Indore - 452018 (M.P.)

Customer Care

Tel: +91-731-4097170/ 71/ 72/ 73/ 74 M. +91 93031 72345

Email: [customercare@indiratrade.com](mailto:customercare@indiratrade.com) [www.indiratrade.com](http://www.indiratrade.com)



INSTITUTIONAL DEALING UNIT

Africa House, 5, Topiwalla Lane, Lamington Road, Mumbai, 400007

Tel: +91 22 30080678 Fax : +91 22 23870767 Email : [ie@indiratrade.com](mailto:ie@indiratrade.com)

**Disclaimer**

This report is for private circulation within the Indira Group. This report is strictly confidential and for information of the selected recipient only and may not be altered in any way, transmitted to, copied or distributed, in part or in whole, to any other person or to the media or reproduced in any form. This report should not be construed as an offer or solicitation to buy or sell any securities or any interest in securities. It does not constitute a personal recommendation or take into account the particular investment objectives, financial situations, or any such factor. The information, opinions estimates and forecasts contained here have been obtained from, or are based upon, sources we believe to be reliable, but no representation of warranty, express or implied, is made by us to their accuracy or completeness. Opinions expressed are our current opinions as of the date appearing on this material only and are subject to change without notice.